



KINTECH



KINTECH ENGINEERING INDUSTRIES

TECHNOLOGY

**DELIVERING QUALITY THROUGH
PASSION & COMMITMENTS**



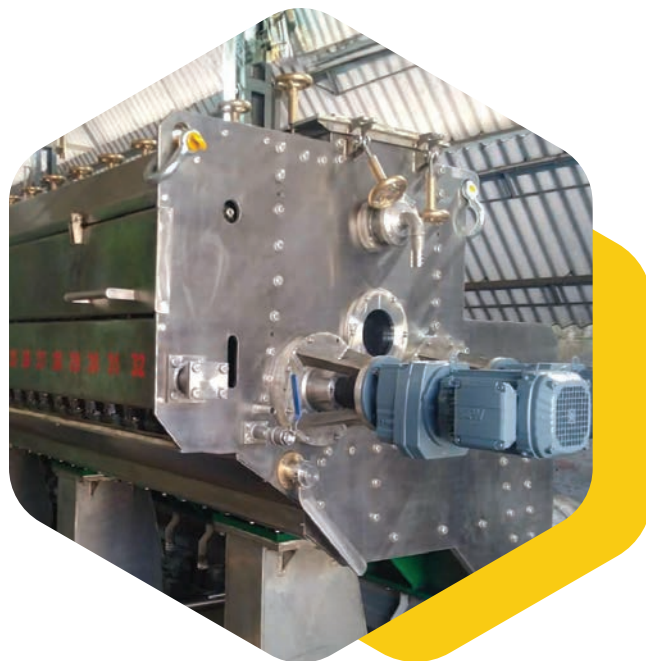
INTRODUCTION

Welcome to KINTECH Engineering Industries

We “**KINTECH ENGINEERING INDUSTRIES**” (**KEI**) is glad to introduce ourselves as key Engineering Equipment and services provider to paper industry. We have solutions to cater to all type of needs of Paper Industry

We “**KEI**” can manufacture Paper machines for different type / grade of paper to be produced right from 50 TPD to 250 TPD. The name has been linked to the Paper industry for the past years. We provide highly competitive, faster and professional services to our customers

We “**KEI**” has been designed to meet the customer specific needs of Paper Industry. We are able to develop an optimized solution that applies to any critical scenario and for all kind of tailor made products as per customer requirement



OUR TEAM

We have a *well-developed R&D team* for updating the latest Design Technologies with automation

OUR VISION

We “**KEI**” will built our Business on fulfilling Customers expectations through excellence in all the products and providing solutions, services to their satisfaction

OUR MISSION

“To deliver greater value to our customers by providing complete competitive solutions through technological leadership and manufacturing excellence that are responsive to dynamic market needs

VALUES

-  **K – Know** the Customer Expectations
-  **I – Integrity** (We Never Compromise our Values)
-  **N – Nurture** to Trend
-  **T – Talented** in making Tailor made Products
-  **E – Excellence** in Engineering
-  **C – Contribution** to Industry and Society
-  **H – Highest** Standards are adopting while manufacturing



HEAD BOX

We “KEI” Can, Design, Manufacturing, supply and Commissioning of Complete New Head Boxes (Open Type, Pressurized and Hydraulic Headboxes) with Best Quality and optimum price

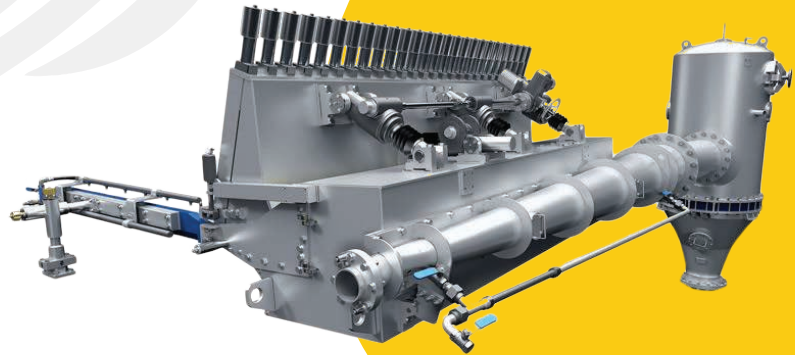
Pressurized Head Box



- Our “KEI” pressurized head box is the most flexible solution that allows operating in a wide range of consistency and speed up to 500 MPM for fourdrinier applications
- Made out of High Quality Stainless steel Material
- Special geometry of the bottom lip and the Micro adjustment of the top lip allow to obtain a very good basis weight profile
- All the surfaces in contact with the stock are mirror polished with finishing grade of 0.2 μm to 0.4 μm
- High Turbulence and Good Formation
- Our Head Box will be supplied along with Foam Killing Shower and two side Edge deckles

Hydraulic Head Box

- Our “KEI” Hydraulic head box is the most flexible solution that allows operating in a wide range of consistency and speed up to 300 MPM to 850 MPM for fourdrinier applications
- PE – TANK having A Turbulence generating damping plate
- Internal stock flow optimization due to an excellent distribution design
- Slice opening can be manual-direct adjustment through high precision micro jacks
- Uniform CM profile
- Excellent formation quality
- Compact design for easy installation on machine



KEI Head Box Applications & Salient Features

- Can produce higher grade writing / printing papers, Kraft Paper, Test linear and Fluting, coated / uncoated duplex board, MG Poster, tissue papers, etc...
- Well Suitable for Low, Medium and for high-speed machine operations
- Speed up to 850MPM
- Slice Width Up to 5200mm
- Good formation



Wire Part (Fourdrinier / Multi Fourdrinier)

We “KEI” can offer the high efficient Wire part concept based on established design for all kind of paper grades



- The length of the Fourdrinier wire table is designed for suit the Customer requirement Considering Paper quality and for furnish used
- These are designed with a frame of cantilever for quick and easy wire change
- All parts in Contact with stock or water are Stainless steel materials and Complete Stainless steel cladding construction

Main parameters

- Available Options : Single or Multi Layer Wires
- Wire width : up to 5000 mm
- Working Speed : up to 850m/min

Features

- Better Formation
- Better water drainage (Dewatering) system



Top Former

We “KEI” Can Provide Complete section, Upgrades and Enhancements top former unit

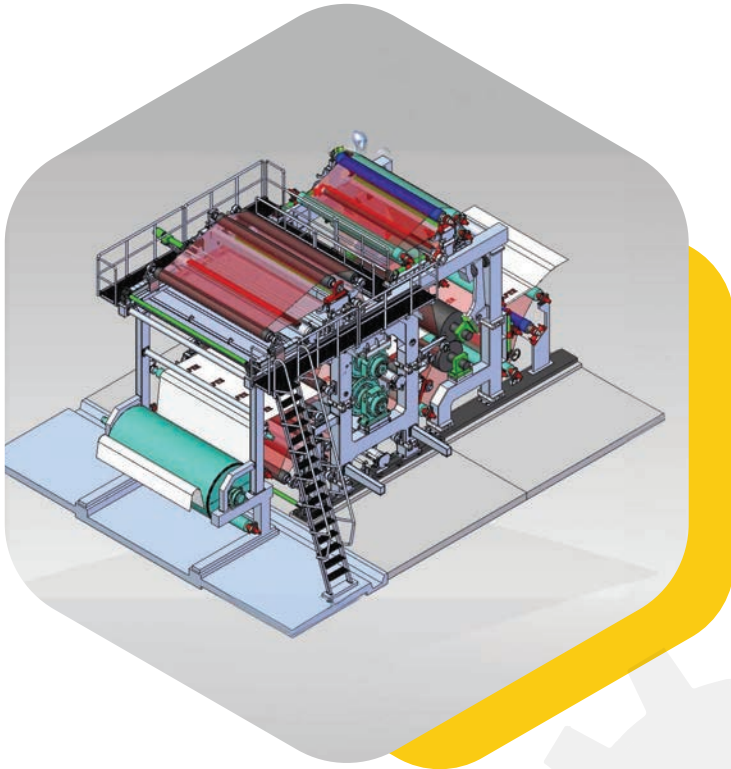
Features

- Significant increase of production capacity
- High flexibility for various grades
- Optimum water removal and high drainage capacity
- Improving of paper Two sidedness
- Design and work safety are in compliance with EU Standards





PRESS SECTION



- We “KEI” Design the Press Section considering for best dryness and bulk
- Press section Ranging from Straight Thro Press, Bi-Nip Press, Combi Bi-Nip Press, Tri Nip Press, Jumbo press (Incl Cantilever) with focus on the requirement of Paper, Board or specialty Papers
- Heavy Duty Framings with Hydraulic System suitable for Nip Load of 450KN/m and Roll Diameter up to 1500mm
- Expansions and modernizations of existing sections



SIZE PRESS SECTION

- Puddle type size press is designed to increase the surface strength of paper web. Other benefits also includes
- Reduced dusting tendency, increased stiffness and reduced air-permeability
- Improve strength, surface smoothness in writing / printing / Media / Kraft / board
Add pigments to the surface of the web
- Rigid framings with Hydraulic or pneumatic loading system
- Size kitchen equipments also can be provided
- Complete Sections, Upgrades and Enhancements





DRYER SECTION

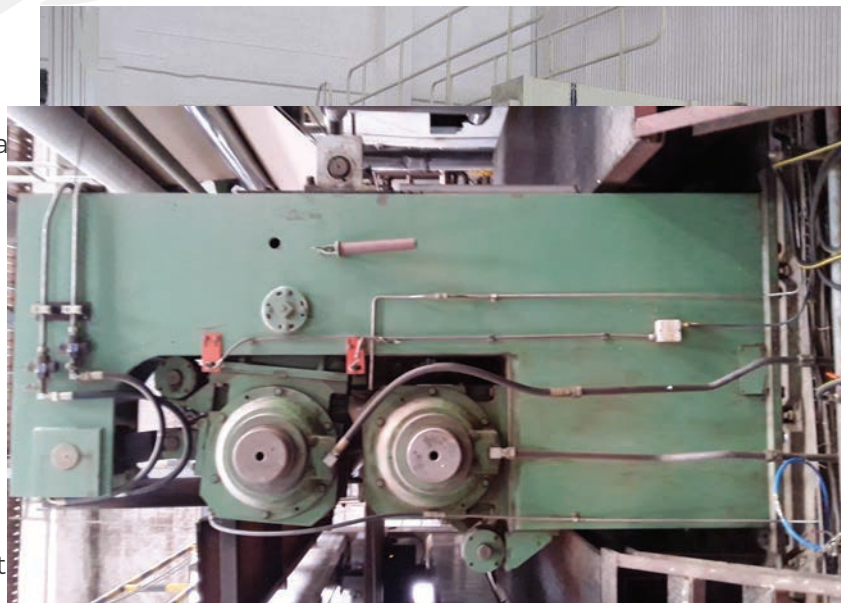


- We “KEI” Design and Supply of dryer section designed for best drying efficiency and uniform drying
- Heavy Duty Dryer Frames are made out of MS Fabricated and Cast iron suitable to drying cylinders dia upto 1800 mm
- Dryer Section can be provided with the entire steam and condensate system and lubrication
- High efficiency doctoring system can be provided for smooth operation
- Converting Open Gear / Closed Gear Drive System into **Silent drive system (Multidrives)**
- Expansions and modernizations of existing dryer sections



CALENDER SECTION

- Calender is designed to make the paper surface extra smooth and glossy and Gives it a more uniform thickness to the final product
- Heavy Duty framings with hydraulic or pneumatic loading system
- Simple and easy to operate
- Auto web feeding
- Back to Back arrangements can be supplied if both surfaces are to be smoothed
- Soft Nip Calender Can also be provided where matting roll has a soft cover to improve web contact uniformity against the heated roll

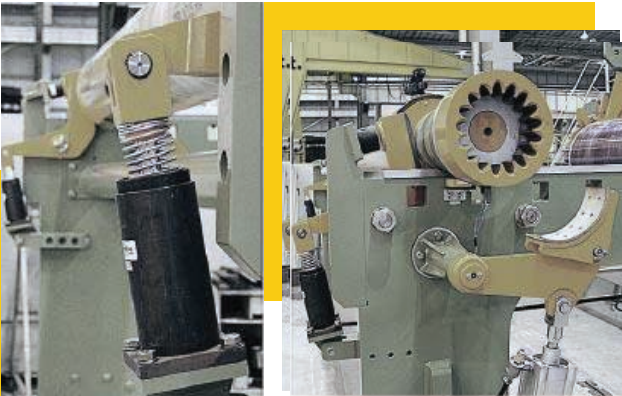




POPE SECTION



- We “ KEI ” manufacture a wide range of Pope Reel is well known for its sturdy construction and high efficiency, **reel face up to 5500mm, reel drum diameter: 800mm - 1200mm**
- Robust design framings with Hydraulic or Pneumatic system to produce homogeneous jumbo rolls with minimum losses
- Flexible design allowing gradual accessories installation until full automation increasing efficiency and safety
- Our Pope section Having options of “ Reel Spool Storage with Loading Arms ”, “ Auto spool Loading System ”, “Jumbo roll weighing station ” and “Extended Rails to unwinder equipped with all necessary devices to ensure operators safety

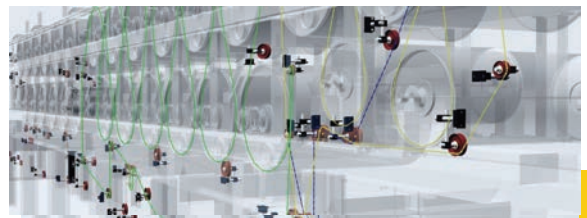
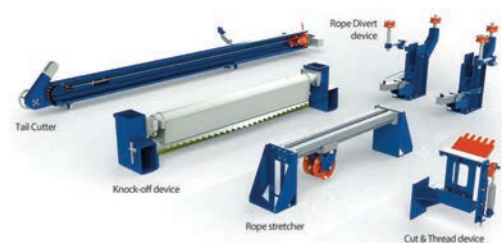


TAIL THREADING SYSTEM

- We “ KEI ” Design and Supply of Wetend / Dryend Tail Cutter, Rope Feeding systems requirements

Benefits

- Allow a safe operation during tail threading
- Reduction in Losses
- Increases machine efficiency





PAPER MACHINE SPARE PARTS



- Head box Holly Rolls, Micro jack (Slice Spindle) and Edge Deckle Board
- Dewatering Elements (Forming Board Box , Hydro Foil Box, All type of Vacuum Boxes, etc..)
- Air / Water Separators For vacuum
- All types of Doctoring System
- Wet End and Dry End Tail cutter
- Wire / Felt Auto Guide and Stretchers
- Uhle Boxes
- All kind of Rolls including Suction rolls along with its Bearing Housing



KINTECH ENGINEERING



Pre Engineering

- Preliminary calculations of production and estimated consumptions
- Analysis of existing equipment and installations
- Identification of bottlenecks and restrictions
- Technical alternatives proposals



Basic Engineering

- Detailed layouts
- Machine GA Drawing with Foundation layout and Load Data
- Providing Drive Power Rating , Vacuum Requirement, Water and Air requirements
- Equipment list
- We “ KEI ” Use the **3D Modeling design Software** for to make Plant Layout and Manufacturing parts of Complete Paper machine

For All Your Paper Machine Needs

Contact Us



Address

SF No. 638/2, Site No.17,
Comsia Industrial Estate,
Vellamadai Village ,
Coimbatore - 641 110,
TamilNadu, India



Phone

+91 8220032378
+91 9443699407

GSTIN

– 33AAXFK9477E1ZN

E-Mail

– kei.kintechenggind@gmail.com

Website

– www.kintechind.in